



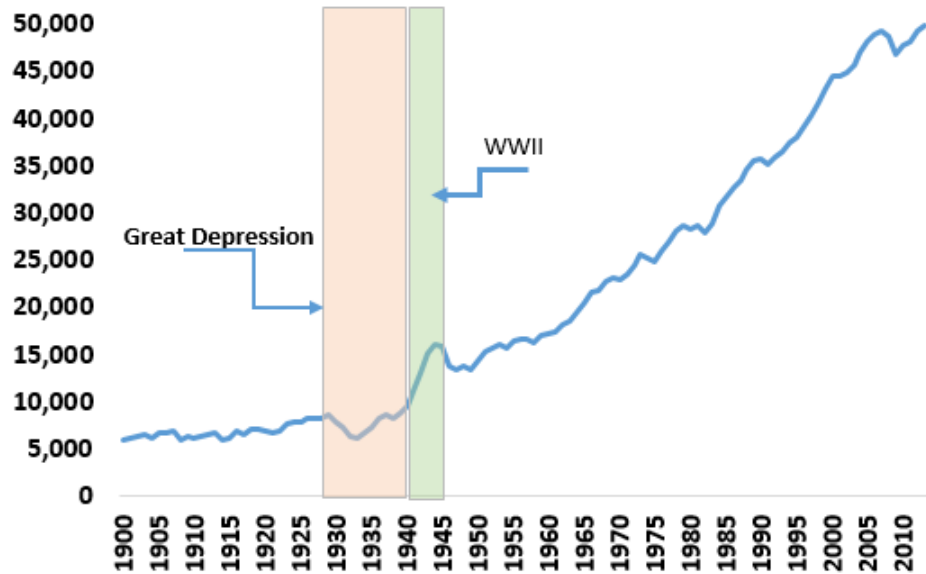
Hunt Institute  
The University of Texas at El Paso  
April 29, 2014

Jim Peach  
Department of Economics and International Business  
and Arrowhead Center  
New Mexico State University  
[jpeach@nmsu.edu](mailto:jpeach@nmsu.edu)



# The Long Run

US Real GDP per Capita: 1900 to 2013

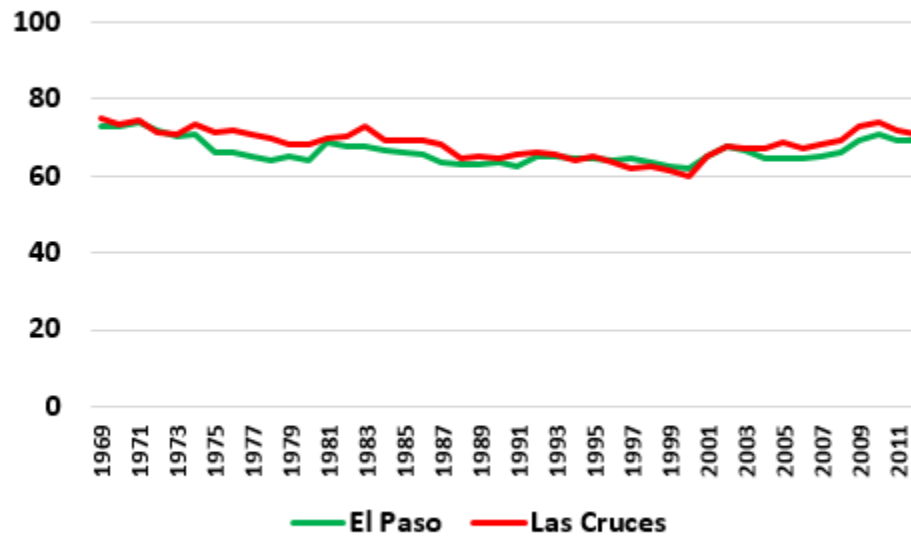


Source: Samuel H. Williamson, 'What Was the U.S. GDP Then?' MeasuringWorth, August 2013.  
Graph by AHC



# The Long Run

**Per Capita Income in El Paso and Las Cruces as Percent of U.S.  
1969 to 2012**



**Source: U.S. Bureau of Economic Analysis**



# What?

<b>MSA</b>	<b>Per Capita Income Rank*</b>
Las Cruces, NM	367
El Paso, TX	370
Pocatello, ID	371
Yuma, AZ	378
Laredo, TX	379
Brownsville-Harlingen, TX	380
McAllen-Edinburg-Mission, TX	381

**\* Rank out of 381 MSAs in 2012**

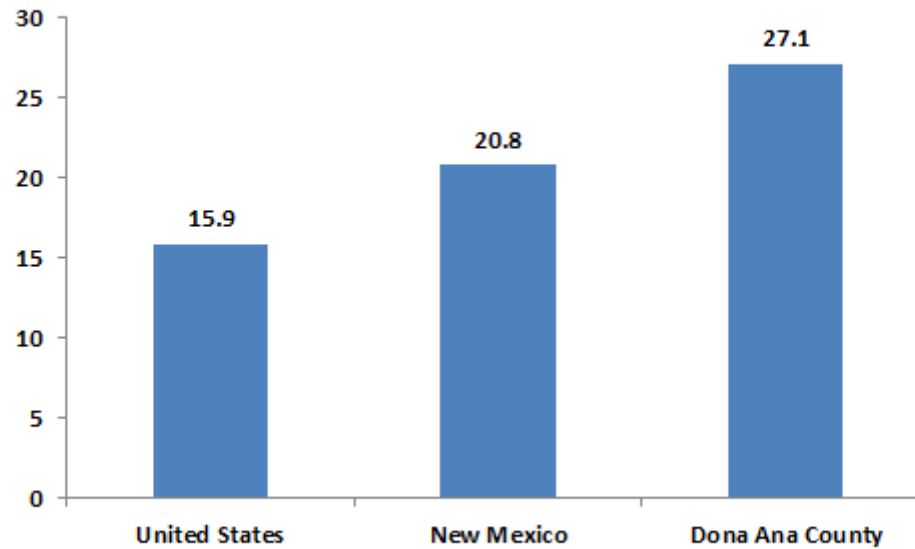


# Poverty

---

## Percent of persons below poverty level

---



---

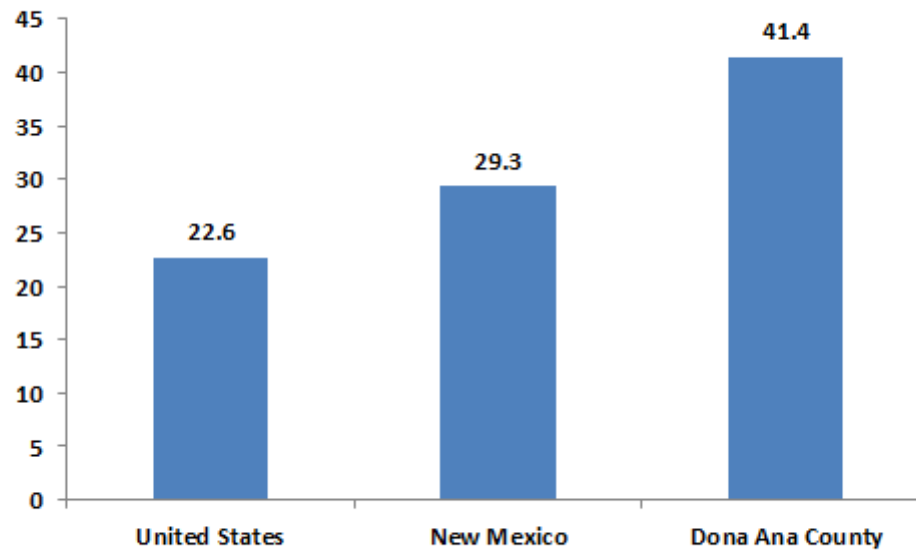
Source: American Community Survey (2012, 1 year estimates)

---



# Youth Poverty

**Percent of persons under age 18 below poverty level (2012)**

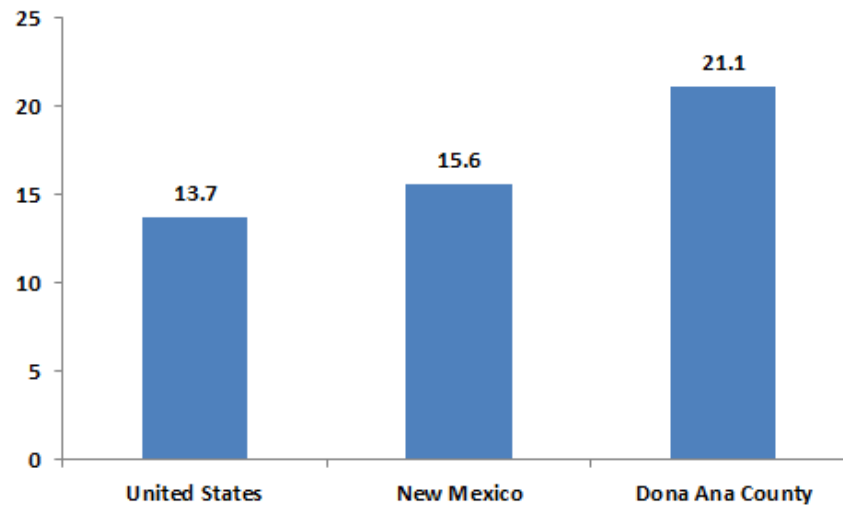


Source: American Community Survey (2012, 1 year estimates)



# Educational Attainment

**Percent of persons 25 years old and older without a high school diploma 2012**



Source: American Community Survey (2012, 1 year estimates)

